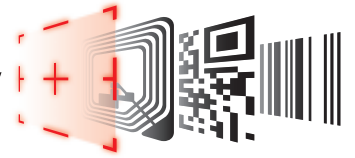


DENSO

Member of the TOYOTA Group

Superior ID-Technology



Bar Code Handy Terminal

BHT-8000 Series

Mobility and Functionality in
Perfection



BHT-8000 Series: with the largest display and largest RAM in its class.

This mobile bar code terminal makes reading bar codes as fast and easy as never before. The large liquid crystal display and the excellent technical possibilities make scanning more comfortable than ever.

Reading

Impressive ability to read difficult bar codes

- Fitted with an advanced scanning system for processing broader, high-density labels and low PCS labels

Improved long-range reading capability

- Scanning range
max. 250 mm (BHT-8000/8100)
max. 400 mm (BHT-8000D)

Viewing

Large liquid crystal display for better readability

- 128 x 64 dot display allows you to configure the display to suit your needs
- Maximum 10 lines with 21 characters each

Performance and Quality

Excellent functions for versatile applications

- Trigger switches on both sides
- Large "magic keys" for easy use
- Resin coated keys prevent letters fading
- Compact body with wide key pitch

Larger RAM for secure data capture

- Maximum 9 MB RAM
- Flash file system for reliable backup

Compact, slim body enhances use for long periods of time

- The pocket-sized device is light, portable and user-friendly

CCD (Charged Coupled Device) Technology

- No moving parts
- Particularly robust

Vibrator for reliable read confirmation

Besides LED and beeping functions the device is also equipped with a vibrator that gives reliable confirmation of successful read processes even in a noisy working environment.

Technical Data BHT-8000

Controller	CPU
	Memory
Display	Size
	Display device
	Capability
	Alphanumeric Kana Kanji Back light
Scanner	Method
	Scanning Area
	Width of reading window
	Readable Codes
	Resolution
	Readable Direction
	Reading Confirmation
Key input	Number of keys
Communications	Optical I/F
	Method
	Speed ⁽³⁾
	Distance ⁽³⁾
	Wireless I/F
	Standard
	Frequency
	Distance ⁽³⁾
	Conversion method
Cable I/F	
Power supply	Main battery
	Operation hours ⁽⁵⁾
Auxiliary functions	
Weight	
Environment Requirements	Operating Temperature
	Water proof
	Shock resistant



(1): Scanning from a range of 290 mm (narrow bars of at least 1.2 mm, per
 (2): Scanning from a range of 400 mm (narrow bars of at least 1.2 mm, per
 (3): Scanning from a range of 300 mm (narrow bars of at least 1.2 mm, per
 (4): Equipped profile/GAP, SDAP, SPP, DUNP.
 (5): Maximum range and speed may vary depending on the working condition



Multifunctional

Available models

- **BHT-8044**
Optimum readability for touch scanning
- **BHT-8044D**
Suitable for a broad range of reading operations, from touch scanning to reading codes over greater distances

- **BHT-8048D**
equipped with 8 MB RAM
- **BHT-8048DB**
With Bluetooth™ for easy to use wireless transfer
- **BHT-8144**
Model for easy desktop scanning (angled scanning beam)

Bluetooth is the registered trademark of Bluetooth SIG Inc. and is used under licence by Denso Wave.

Software for the BHT-8000 Series

Development and data transfer tools

- BHT-BASIC 3.6 Compiler
- BHT-BASIC Remote Debugger
- IR Transfer Utility C
(for transfer via RS-232C interface and infrared)
- Easy Pack Pro

BHT-8044	BHT-8044D	BHT-8048D	BHT-8048DB	BHT-8144
4.5 MB (User area 2.5 MB)		8.5 MB (User area 6.3 MB)	9 MB (User area 6.1 MB)	4.5 MB (User area 2.5 MB)
32 bit RISC micro processor				
128 x 64 dots				
Liquid crystal dot matrix display				
21 chars x 8 lines (regular font), 21 chars x 10 lines (small font)				
8 chars x 4 lines (regular font), 10 chars x 5 lines (small font)				
LED				
Advanced scanning				
260 mm max ⁽¹⁾	340 mm max ⁽²⁾			260 mm max ⁽¹⁾
39 mm				
EAN-13/8, UPC-A/-E, UPC/EAN (with add on code), Interleaved 2 of 5, CODABAR (NW-7), CODE39, CODE93, CODE128 (EAN-128), Standard 2 of 5				
0.10 mm	0.15 mm			0.125 mm
Straight				
Slant				
Red, green 2 color LED, beeper and vibration				
24 keys (including power button) + 2 magic keys + 2 trigger keys				
Infrared (IrDA-SIR Ver. 1.2 (Low Power) compliant)				
115.2 Kbps max				
Approximately 0.15 m				
-		Bluetooth Ver 1.1 PowerClass 2 ⁽⁶⁾		-
-		2.4 GHz band		-
-		5 m		-
-		DSSS (frequency hopping)		-
RS-232C (115.2 Kbps max)				
Two AAA alkaline batteries or Ni-MH battery cartridge (selective option)				
Ni-MH battery cartridge: Approx. 30 hours Two AAA alkaline batteries: Approx. 80 hours (Two times scanning of bar code in 10 seconds) ⁽⁷⁾				
			Ni-MH battery cartridge: Approx. 6 hours Two AAA alkaline batteries: Approx. 8 hours ⁽⁸⁾	-
Calendar clock, beeper, vibrator, resume function, low-battery indication, remote wakeup function				
Approx. 160 g				
Operating: -5 to 50°C				
JIS drip-proof II				
Six surfaces of unit, five times each (total 30 times) from 1.2 m (47.2 inch) onto concrete floor ⁽⁹⁾				

Peripheral brightness min. 500 lux).
Peripheral brightness min. 500 lux).
Peripheral brightness min. 500 lux).

- (6): Operation without mains power may vary depending on the working conditions.
(7): When using the BHT-8000D Series in energy-saving mode.
(8): A 30-second cycle: Scanning (1 second), data transfer, display (1 second), standby.
(9): Test value, not guaranteed.

tions.

Note

Carefully read the user manual before using the device. Specifications are subject to change without notice. Information current as of June 2004.

Accessories

- Hand strap

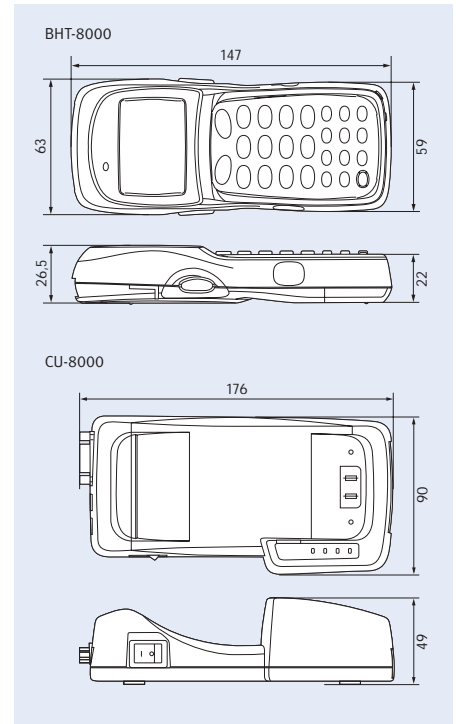
Software (not supplied)

- BHT-BASIC Extension Pack (BHT-BASIC 3.6 Compiler, BHT-BASIC Remote Debugger, IR Transfer Utility C, cable)
- BHT-BASIC 3.6 Compiler
- BHT-BASIC Remote Debugger
- IR Transfer Utility C
- DLL Pack for IR Transfer Utility C
- Easy Pack Pro

Optional Accessories (not supplied)

- Optical data communication unit
- Battery charger
- B-65N nickel hydrogen battery B-65N
- Manual pack
- Soft case/belt case
- Neck strap

Dimensions (in mm)



Technical Data CU-8000

			CU-8001	CU-8002	CU-8021 ⁽¹⁾	CU-8011 ⁽²⁾
Communications	BHT ← → CU	Method	IrDA-SIR Ver 1.2 (Low Power) compliant			
		Speed	115.2 Kbps MAX			
	CU ← → Host	Method	RS-232C		USB 1.1 Full-Speed compliant	Ethernet
	Connector		Dsub-9P		USB B Type receptacle	RJ-45
Status indicator	LEDs		4 ⁽³⁾	—	4 ⁽³⁾	4 ⁽³⁾
Battery Charger	Charge time	Battery loaded in BHT-8000 (D)	8-hour	—	8-hour	
		Battery alone	8-hour	—	8-hour	
Power source			AC/DC adapter	From a connection part	From a connection part	AC/DC adapter

(1): The attempt to make a connection could fail depending on the PC or USB hub used. First check if devices are compatible. The AC/DC adapter (not included in the scope of delivery) is needed for charging and discharging the batteries if power is not fed from the connected device, for example because it is switched off or in standby mode.

(2): Available shortly.

(3): ON, data transfer, BHT charging, battery charging.

Company Stamp